



DSM USA

DES MOINES, IOWA

ADVANCED MANUFACTURING

LOW COST, HIGHER PROFITS

12%
LOWER

The cost of doing business is 12% lower than the national average.
— *Moody's Analytics*

22%
LOWER

Energy costs are significantly lower than the national average.
— *Moody's Analytics*

5.66¢

The average industrial electricity rate is 5.66 cents per kilowatt-hour.

— *Edison Electric Institute*

RECENT PROJECTS

Kreg Enterprises, Inc.:
\$34 MILLION

Lely North America:
\$20 MILLION

Michael Foods:
\$85 MILLION

Helena Industries, LLC:
\$47 MILLION

Vermeer Corporation:
\$118 MILLION

PRO-BUSINESS

NO⁰⁰
TAXES

No sales, use or property tax on machinery and equipment. No sales tax on electricity or natural gas used in the manufacturing process. No corporate income tax on profits from outside Iowa.

Iowa is a

**RIGHT
-TO-
WORK**

state.

6.5%

- Iowa offers a refundable 6.5% tax credit for R&D activities.
- State financial assistance.
- Local property tax abatement.

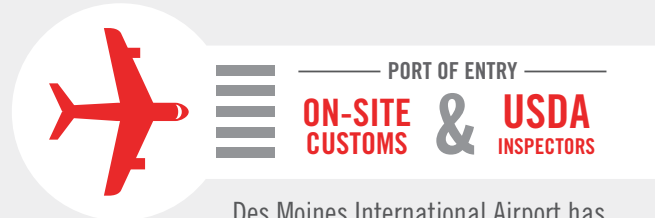


**GREATER DES MOINES
PARTNERSHIP**

TRANSPORTATION INFRASTRUCTURE



- 60 million+ people accessible within a 500-mile radius.
- 427 trucking establishments in the region.
- Access to three Class 1 railroads from a newly constructed transload facility.
- Railroads serving the region include Burlington Northern Santa Fe, Iowa Interstate, Norfolk Southern and Union Pacific.
- Foreign Trade Zone #107.

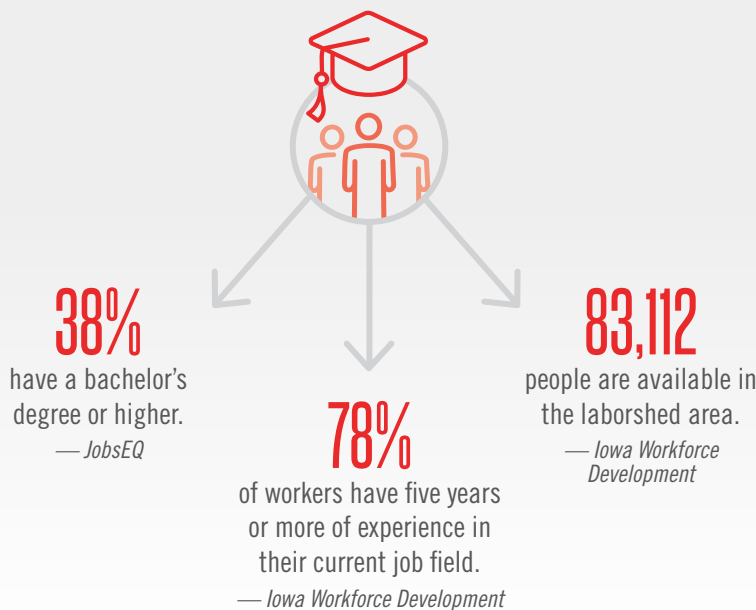


Des Moines International Airport has 1.2 million square feet in cargo apron.



Crossroads of I-80 / I-35 and part of USMCA corridor.

EFFICIENT, CAPABLE WORKFORCE



MAJOR MANUFACTURERS IN DSM USA

- 3M Company
- Accumold
- Anderson Erickson Dairy
- Andersen Windows
- B&G Foods
- Bridgestone
- ColorFX
- DeeZee, Inc.
- EFCO Corp
- Emerson/Fisher Division
- JBS Swift
- John Deere Companies
- Lennox
- Pella Corporation
- Pine Ridge Farms
- Quality Manufacturing
- The Wittern Group
- Titan Tire Corporation
- Tyson
- UTC Aerospace Systems
- Vermeer Corporation
- Weiler, Inc.
- Windsor Windows & Doors

MIKE SWESEY

Executive Vice President of Economic Development p: (515) 286-4997 e: mswessey@DSMpartnership.com

growDSMUSA.com | dataDSMUSA.com

