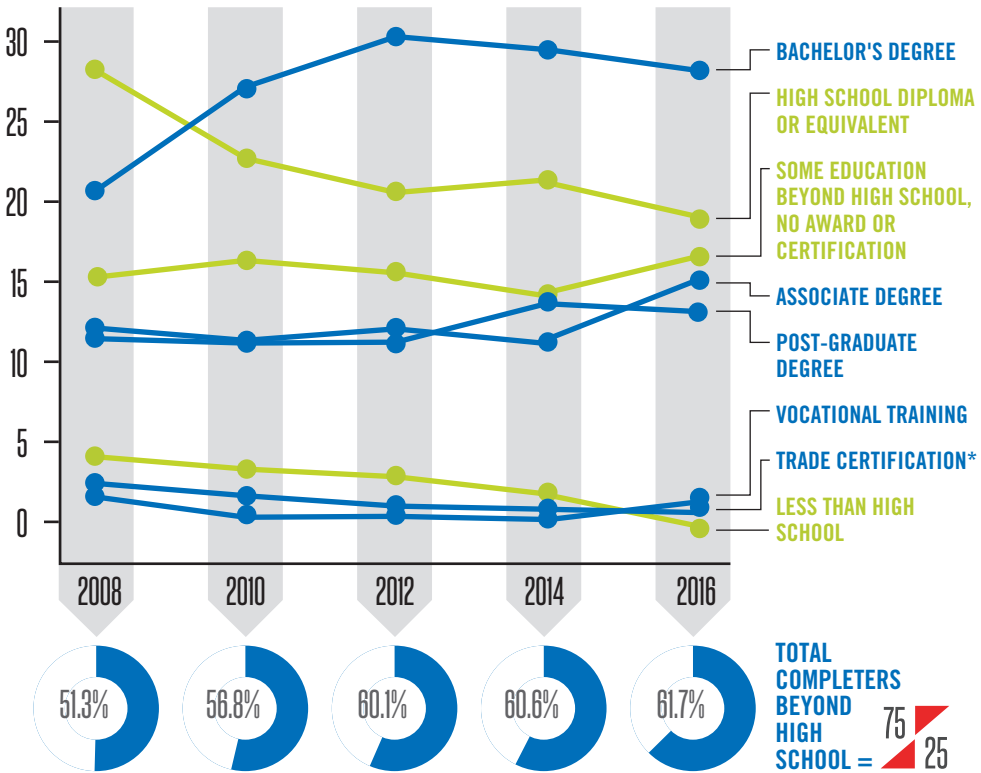


Research shows more than 70 percent of jobs in Greater Des Moines (DSM) by 2025 will require some post-secondary experience including certifications, credentials, two-year degrees, four-year degrees and beyond. To meet this challenge, EDGE is a regional goal of 75x25 — ensuring by 2025 that 75 percent of the region’s working-age population has a post-secondary experience aligned to employer needs. Currently in the region, 79.3 percent of the adult population has some education past High School. Of that percentage, 61.7 percent have obtained a certificate, vocational training, two-year degree or above.

The report card below outlines educational attainment trends from 2008 to 2016 for residents in the 25-to-64-year-old age range in The Partnership’s eight-county service area — showing progress to-date in reaching the 75x25 goal.



- Includes Dallas, Jasper, Madison, Marion, Marshall, Polk, Poweshiek and Warren counties
- * Note: Statistics are currently unavailable for number of individual attainment in an industry-recognized credential.
- Source: American Community Survey provided by the U.S. Census Bureau

EDGE is intended to engage the community in support and ownership. By believing in and upholding the goals of EDGE 75x25, you are joining a common agenda to make a greater impact in DSM.

For more information, contact Mary Bontrager, Executive Vice President of Talent Development for the Greater Des Moines Partnership at mbontrager@DSMpartnership.com or (515) 286-495.

In Partnership with

