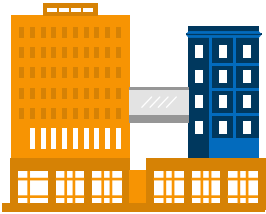


# DOWNTOWN DSM USA

DES MOINES, IOWA



## PREMIUM BUSINESS ENVIRONMENT



More than four miles of connected skywalks.

**\$3 BILLION**  INVESTED

**80,000+**  people work Downtown.

## NEIGHBORHOODS

- Gray's Lake Area
- Historic Court District
- Historic East Village
- Market District
- Sherman Hill
- Western Gateway Park

## NATIONAL RANKINGS

**#1** Best Minor League Sports Market  
— *Sports Business Journal*, 2017

**TOP 10** Best Place for Business and Careers  
— *Forbes*, 2018

**#1** World Festival and Event City  
— *International Festivals & Events Association*, 2017

**#1** Most Popular City for Millennial Homebuyers  
— *Lending Tree*, 2018

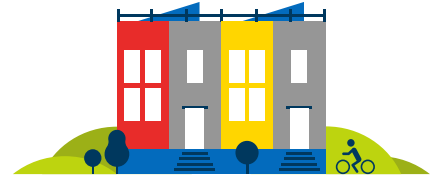
**#3** Best Affordable Place to Live in the U.S.  
— *U.S. News & World Report*, 2019

## VIBRANT URBAN ENVIRONMENT



2,300 new housing units under construction/planned.

**800+**  miles of recreational trails for walking, running and biking.



12,000+ people live Downtown.

**#downtownDSM**  
[downtownDSMUSA.com](http://downtownDSMUSA.com)

 **GREATER DES MOINES  
PARTNERSHIP**

# RECENT PROJECTS IN DOWNTOWN DSM USA

**428 E. GRAND** ..... \$30 MILLION  
*Residential*

**CARBON 55** ..... \$9 MILLION  
*Residential*

**CONNOLLY LOFTS** ..... \$10 MILLION  
*Residential*

**DISTRICT AT 6TH** ..... \$40 MILLION  
*Residential*

**GRAY'S STATION PHASE I** ..... \$19 MILLION  
*Residential*

**GRIFFIN BUILDING** ..... \$12.4 MILLION  
*Residential*

**LINC APARTMENTS** ..... \$37 MILLION  
*Residential*

**MIESBLOCK** ..... \$66 MILLION  
*Residential*

**ROWAT LOFTS** ..... \$28 MILLION  
*Residential*

**THE BANKS PHASE II** ..... \$18 MILLION  
*Residential*

**111 E. GRAND OFFICE/RETAIL** ..... UNKNOWN  
*Commercial*

**GRAY'S LANDING OFFICE BUILDING** ..... \$15 MILLION  
*Commercial*

**KRAUSE GATEWAY CENTER** ..... \$151 MILLION  
*Commercial*

**MIESBLOCK COMMERCIAL** ..... \$11.2 MILLION  
*Commercial*

**21C MUSEUM HOTEL** ..... \$107 MILLION  
*Hotel*

**FAIRFIELD INN AND SUITES** ..... \$10.8 MILLION  
*Hotel*

**HOTEL FORT DES MOINES** ..... \$37 MILLION  
*Hotel*

**APARIUM GROUP HOTEL** ..... \$39.7 MILLION  
*Hotel*

**COURT AVENUE BRIDGE REHAB** ..... \$7 MILLION  
*Civic*

**GRAY'S LAKE AREA PEDESTRIAN BRIDGE** ..... \$4 MILLION  
*Civic*

**LOCUST STREET BRIDGE** ..... \$8 MILLION  
*Civic*

## HOME TO:

Art Route DSM | Brenton Skating Plaza | Cowles Commons | Des Moines Arts Festival® | Des Moines Performing Arts |  
Des Moines Social Club | DSM Book Festival | Downtown Farmers' Market | Gray's Lake Area | Iowa Barnstormers | Iowa Cubs |  
Iowa Events Center | Iowa Wild | Iowa Wolves | John and Mary PappaJohn Sculpture Park | Principal Riverwalk | Recreational Trails |  
Science Center of Iowa | World Food & Music Festival | 80/35 Music Festival

## MAJOR EMPLOYERS:

American Enterprise Group, Inc. | American Republic Insurance | Bankers Trust | CenturyLink | Cognizant | Des Moines Register/LOCALiQ |  
EMC Insurance Companies | Global Atlantic | MercyOne | Meredith Corporation | MidAmerican Energy Company | Nationwide | Principal |  
State of Iowa | UnityPoint Health – Des Moines | Voya Financial | Wells Fargo & Co.

**DOWNTOWN**  
**DSM USA**

**TIM LEACH**  
Senior Vice President of Downtown Development  
p: (515) 286-4944 e: tleach@downtownDSMUSA.com  
[downtownDSMUSA.com](http://downtownDSMUSA.com)



**GREATER DES MOINES**  
**PARTNERSHIP**